

- 滿油閥之功用是，作為液壓缸與油箱之間的排油閥用途。
- 在大型壓力機構的快進行程需從油箱向油缸吸油。在加壓時可防止油從油缸流入油箱。反向時油缸則會將油排至油箱內。
- To drain oil between cylinder and Tank is a function of prefill valves.
- During operation in a large pressure mechanism, it needs to suck oil from tank to hydraulic cylinder. While pressurizing, it prevents the oil flowing from hydraulic cylinder to tank. When reversion, hydraulic cylinder will make oil draining to tank



SG-16. 24
SG-24R. 24L
SG-32. 32R

型號意義 How to order :

SG - 24 - R

1 2 3

1	系列號	Series
2	口徑代號	Valve size 16:2", 24:3", 32:4"
3	無記號:180度 / LR:90度	No code: 180° / LR: 90°

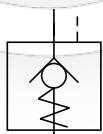
產品規格 Specification :

名稱 Name	口徑 Valve Size	型號 Model	最高使用壓力 Max. Pressure (Kgf/cm ²)	額定流量 Rated Flow (ℓ/min)		使用流量 Operating Flow (ℓ/min)		啓流壓力 Max. Flow (Kgf/cm ²)	重量 Weight (Kg)
				真空自吸 Vacuumed suction	PL使用時 Using PL	真空自吸 Vacuumed suction	PL使用時 Using PL		
滿油閥 Pre-fill valves	2	SG-16	250	260	400	260±100M	400±100M	0.12	30
	3	SG-24	250	600	900	600±150M	900±150M	0.14	54
	4	SG-32	250	1100	1600	110±300M	1600±300M	0.16	100
	4	SG-32R	250	1100	1600	110±300M	110±300M	0.16	108

附件 Attachment :

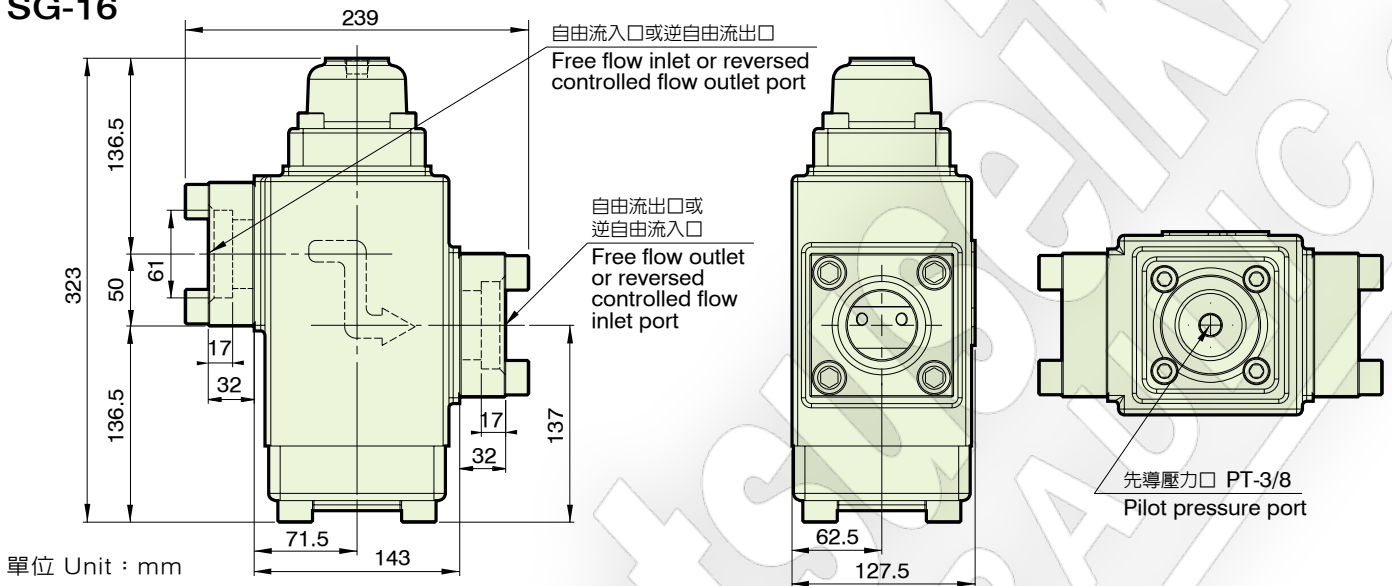
型號 Model	安裝螺絲 Mounting bolts	O 型環 O-Ring	O 型法蘭 O-Flange
SG-16	M16 x 50L 8 支 piece	JIS B 2401-1B-G65 2 條 piece	2" 2 塊 block
SG-24	M16 x 60L 4 支 piece	JIS B 2401-1B-G85 2 條 piece	2-1/2" 1 塊 block
	M20 x 60L 4 支 piece	JIS B 2401-1B-G85 2 條 piece	3" 1 塊 block
SG-32	M16 x 50L 6 支 piece	JIS B 2401-1B-G120 2 條 piece	3-1/2" 1 塊 block
	M20 x 60L 8 支 piece	JIS B 2401-1B-G120 2 條 piece	4" 1 塊 block
	M10 x 35L 4 支 piece	JIS B 2401-1B-G30 1 條 piece	3/4" 1 塊 block

圖形符號 Graphic symbol :

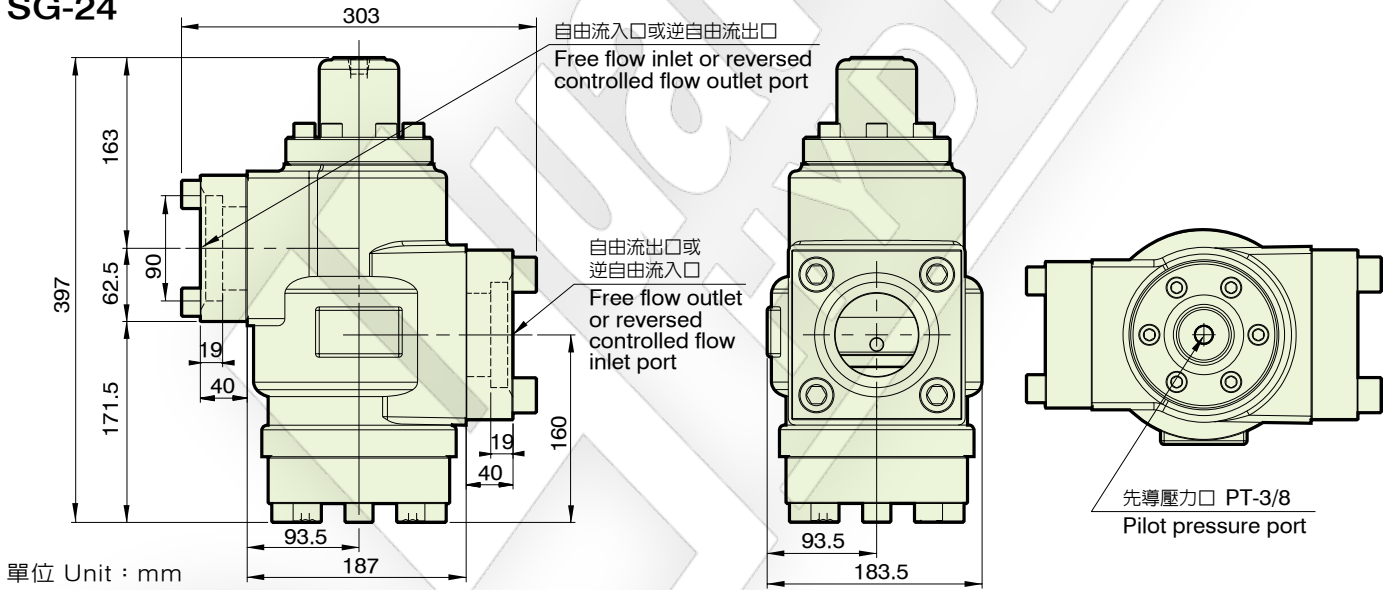


SG

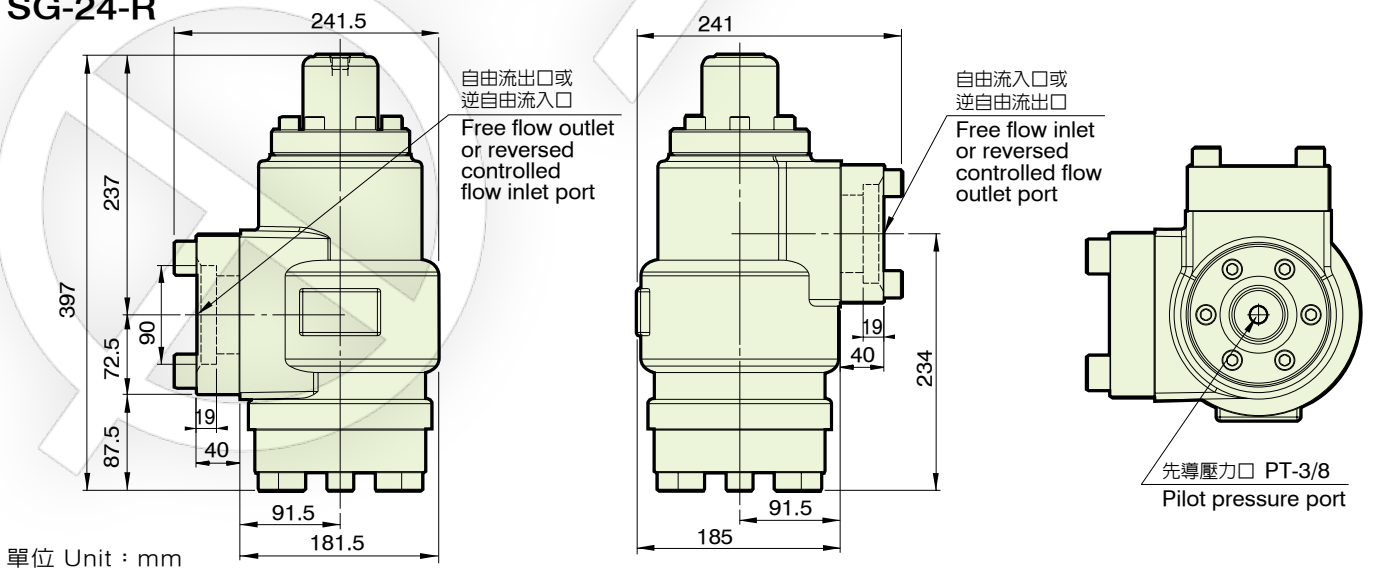
SG-16



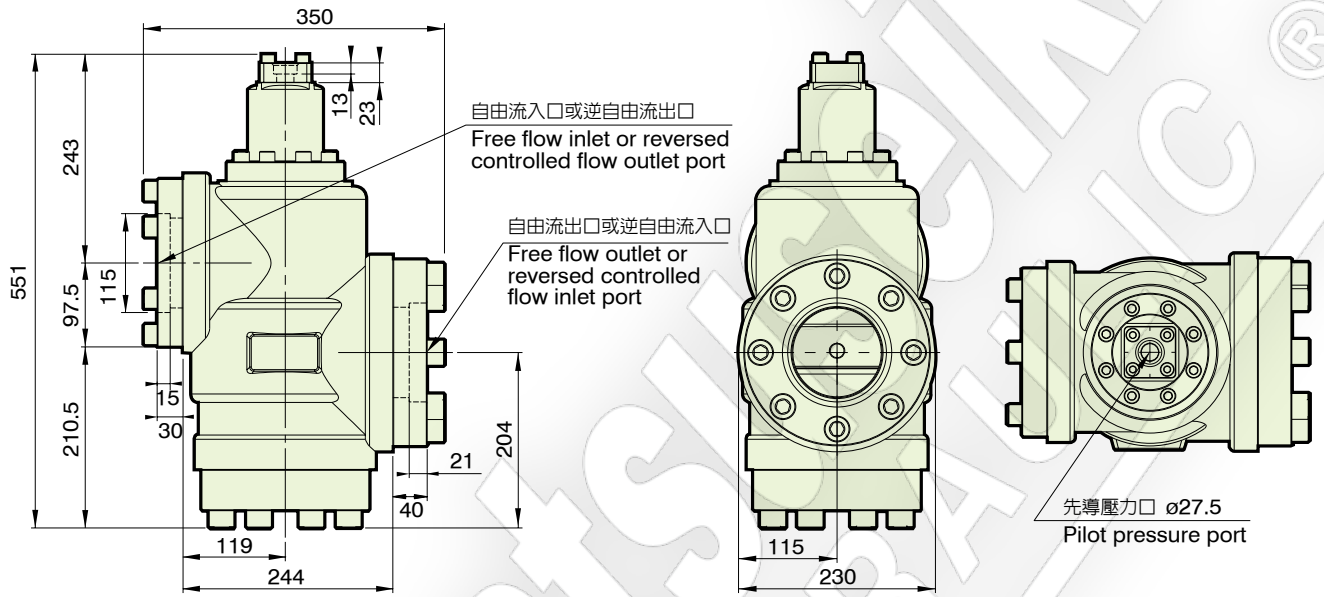
SG-24



SG-24-R

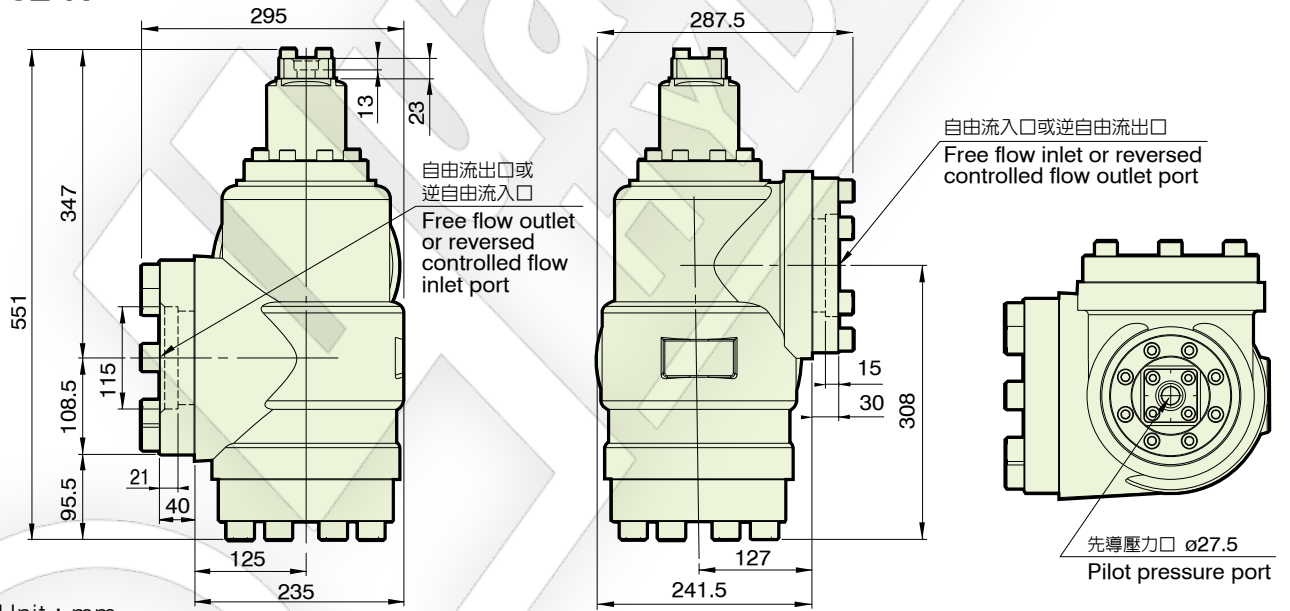


SG-32



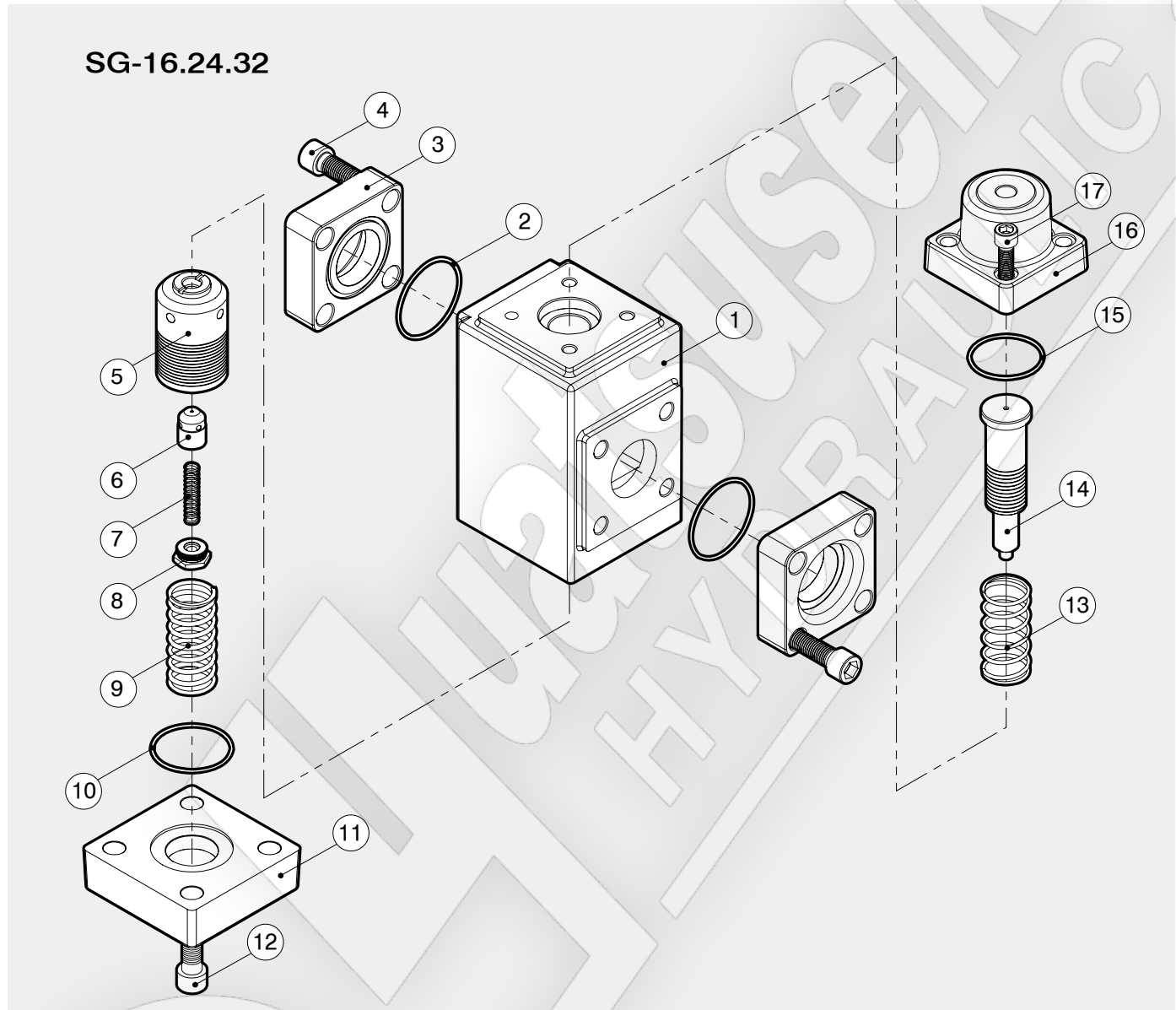
單位 Unit : mm

SG-32-R



單位 Unit : mm

爆炸圖 How to order for a complete assembled valve



方向控制閥
滿油閥
Directional Control Valve (Pre-fill valves)

項次編號 No.	品名 Name of parts	數量 Q
1	本體 Body	1
2	SG-16 JIS B 2401-1B-G65	2
	SG-24 JIS B 2401-1B-G85	2
3	SG-24 JIS B 2401-1B-G120	2
	SG-32 JIS B 2401-1B-G120	2
4	SG-16 M16 x 50L	8
	SG-24 M16 x 60L	4
5	SG-24 M20 x 60L	4
	SG-32 M16 x 50L	6
6	SG-32 M20 x 60L	8
	SG-32 M20 x 60L	8
7	槍子閥 Check valve	1
8	槍子閥-小 Check valve small	1
9	槍子閥彈簧-小 Spring small	1
10	螺母 Nut	1
11	槍子閥彈簧-大 Spring big	1
12	SG-16 JIS B 2401-1B-G60	1

項次編號 No.	品名 Name of parts	數量 Q
10	SG-24 JIS B 2401-1B-G95	1
	SG-32 JIS B 2401-1B-G125	1
11	底蓋 Cover	1
12	SG-16 M16 x 55L	4
	SG-24 M16 x 60L	12
13	SG-32 M20 x 70L	8
	彈簧 Spring	1
14	推桿 Push rod	1
15	SG-16.24 JIS B 2401-1B-G55	1
	SG-32 JIS B 2401-1B-G75	1
16	閥蓋 Cover	1
	SG-16 M12 x 40L	4
17	SG-24 M12 x 40L	6
	SG-32 M12 x 40L	8
18	SG-32 M10 x 35L	4