

- SF 系列電磁控制式節流閥之構造，是由可調式流量控制閥和電磁閥組成。再通常情況下，油路可自由流通，當電磁閥作動時，可作流量大小之調整。
- SF 系列節流閥適合使用在需要快慢兩段速度控制之迴路中。
- Solenoid operated flow control valve SF series is composed of adjustable flow control valve and solenoid valve. The circuit is open normally, when turn the solenoid valve on, the flow is adjustable.
- Flow control valve SF series is used on circuit with both fast-slow speed.



SF-03. 06. 10

流量控制閥 電磁控制式節流閥
Flow Control Valve (Solenoid operated flow control valve)

型號意義 How to order :

SF - 06

1 2

1 系列號

Series

2 口徑代號

Valve size 06:3/4", 10:1-1/4"

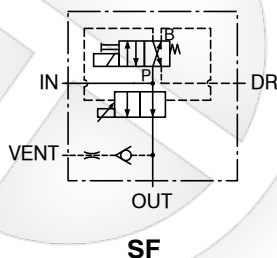
產品規格 Specification :

名稱 Name	口徑 Valve Size	型號 Model	最大流量 Max. Flow (ℓ/min)	重量 Weight (Kg)
電磁控制式節流閥 Solenoid operated flow control valve	3/8	SF-03	120	2.9
	3/4	SF-06	125	5.6
	1-1/4	SF-10	240	8.8

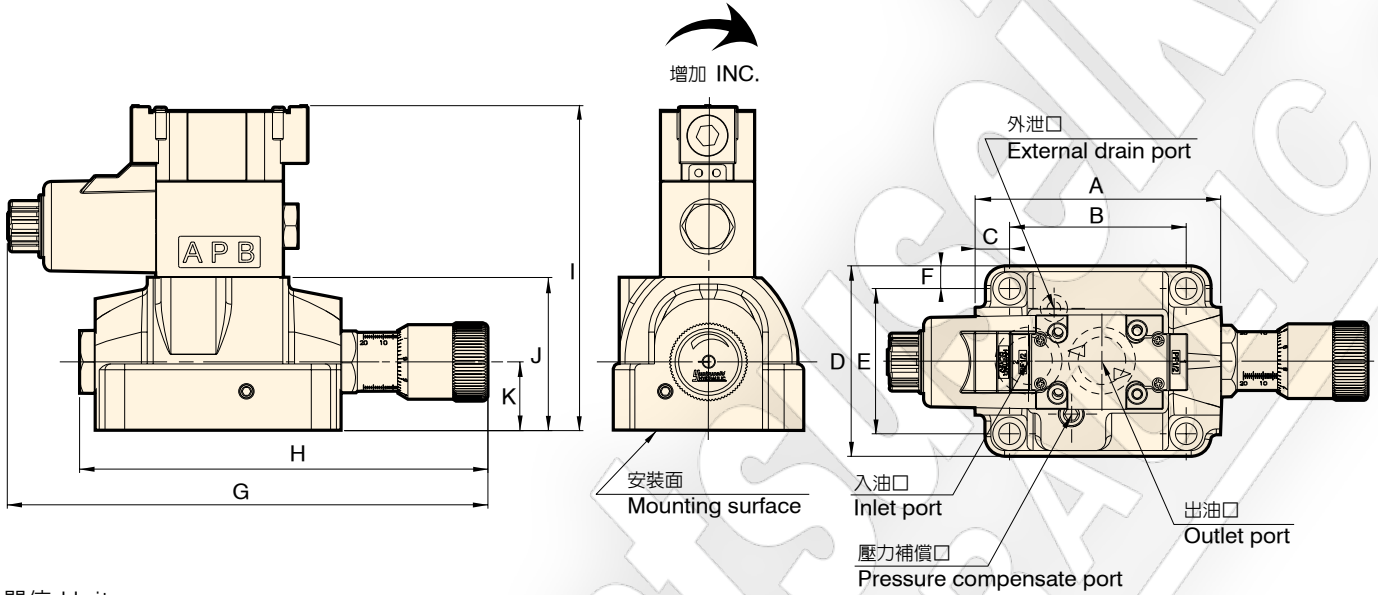
附件 Attachment :

型號 Model	安裝螺絲 Mounting bolts	O 型環 O-Ring
SF-03	M6 x 65L 4 支 piece	JIS B 2401-1B-P10 2 條 piece JIS B 2401-1B-P18 2 條 piece
SF-06	M10 x 45L 4 支 piece	JIS B 2401-1B-P12 2 條 piece JIS B 2401-1B-P29 2 條 piece
SF-10	M12 x 55L 4 支 piece	JIS B 2401-1B-P12 2 條 piece JIS B 2401-1B-P34 2 條 piece

圖形符號 Graphic symbol :



SF-03.06.10



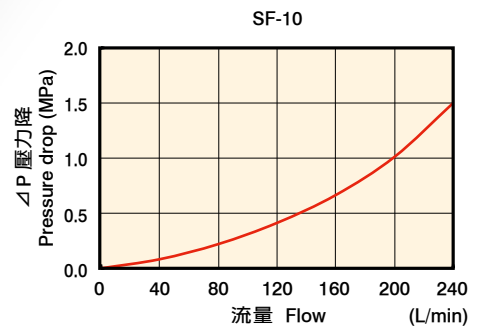
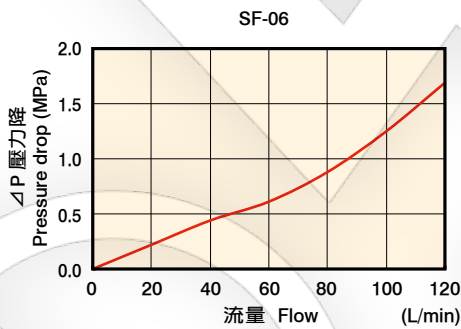
單位 Unit : mm

型號 Model	A	B	C	D	E	F	G	H	I	J	K			
SF-03	108	60	24	70	40	15	237	168	149	62	31			
SF-06	125	90	17.5	97	74	11.5	245	208	166	78	35			
SF-10	150	112	19	116	86	15	281	246	176	88	42			

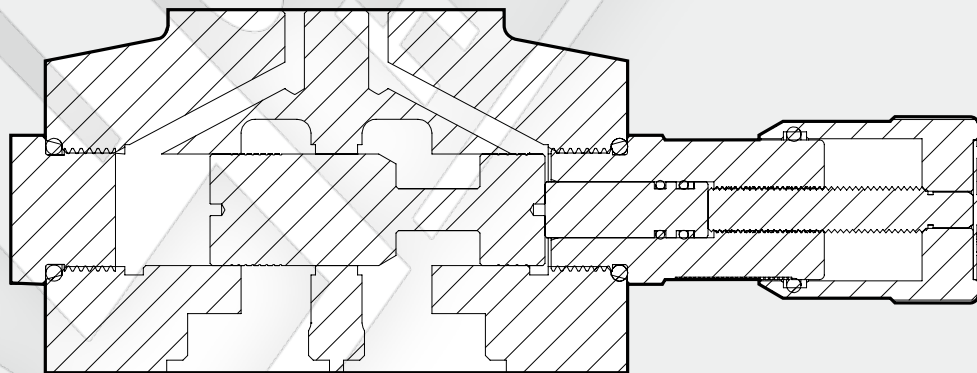
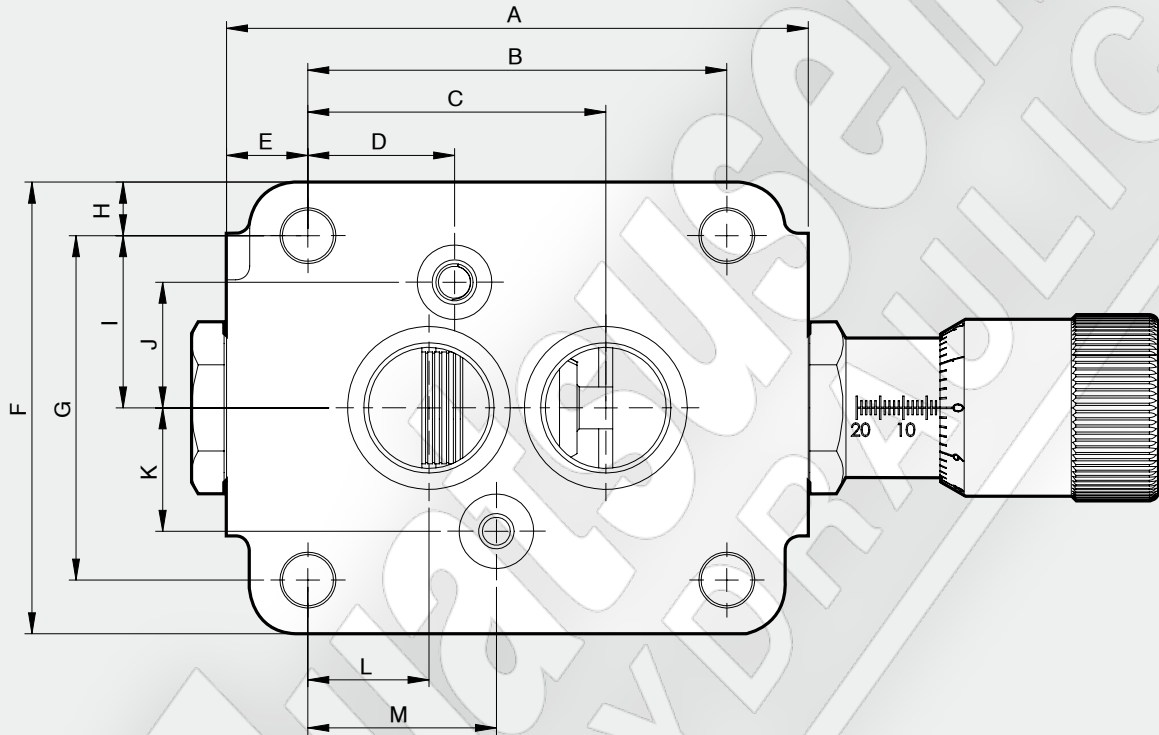
性能曲線圖 Performance curves

■ 流量-壓力特性曲線圖
The characteristic curve chart of Flow vs. Pressure

使用油：黏度 Test fluid viscosity: 35mm²/s {cSt}
Test temperature 50°C



底版尺寸圖 Bottom plate dimensions

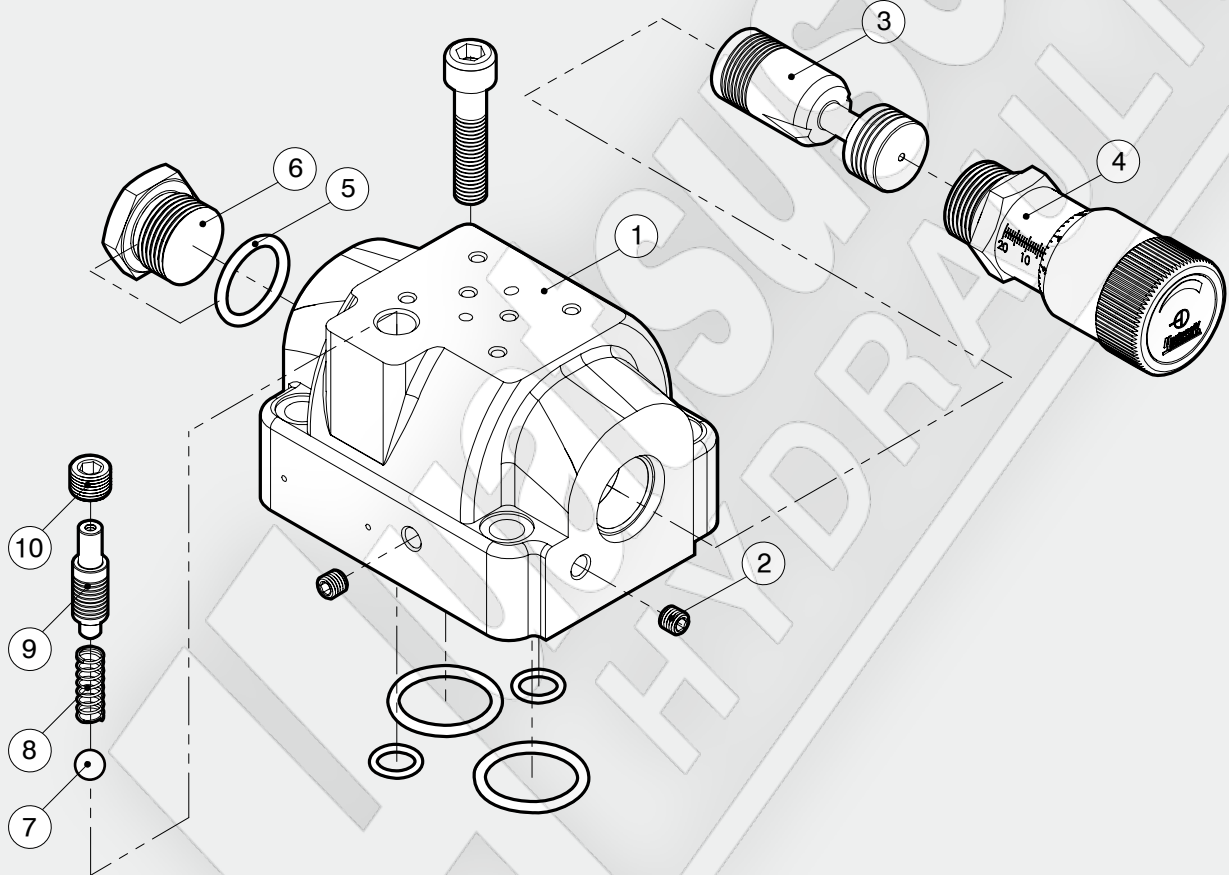


單位 Unit : mm

型號 Model	A	B	C	D	E	F	G	H	I	J	K	L	M
SF-03	108	60	45	30	24	70	40	15	20	20	20	15	30
SF-06	125	90	64	31.5	17.5	97	74	11.5	37	27	26.5	26	40.5
SF-10	150	112	78	65.5	19	116	86	15	43	32	32	34	74.3

爆炸圖 How to order for a complete assembled valve

SF-03.06.10



流量控制閥 電磁控制式節流閥
Flow Control Valve (Solenoid operated flow control valve)

項次編號 No.	品名 Name of parts	數量 Q
1	本體 Body	1
2	PT 1/16	2
3	心軸 Spool	1
4	微調把手 Fine-tune the handle	1
5	SF-03 JIS B 2401-1A-P20	2
	SF-06 JIS B 2401-1A-P24	2
	SF-10 JIS B 2401-1A-P32	2

項次編號 No.	品名 Name of parts	數量 Q
6	螺母 Nut	1
7	鋼珠 Ball	1
8	彈簧 Spring	1
9	推桿 Push rod	1
10	PT 1/4	1