

壓力控制閥 (電磁式引導動作型溢流閥低噪音型)

PRESSURE CONTROL VALVE (Low noise type solenoid pilot operated relief valve)

- S-BSG 系列電磁式引導動作型，是由溢流閥和電磁換向閥組成。
- 電磁閥安裝在溢流閥上，並與溢流閥遙控口連通。
- 電磁線圈之電力信號可遙控系統之壓力。
- 如與遙控溢流閥連接，可提供 2 級或 3 級壓力控制。
- 此系列溢流閥具低噪音特性。
- Solenoid controlled relief valve S-BSG series is composed of relief and solenoid valve.
- Solenoid valve is mounted on top of relief valve, and connected with vent port of relief valve.
- The power signal of solenoid can control the system pressure.
- If connect with vent port of relief valve, it will offer dual-level / triple-level pressure control.
- Relief valve designed with low noise.



S-BSG-03.06.10

壓力控制閥 電磁式引導動作型溢流閥低噪音型
Pressure Control Valve (Low noise type solenoid pilot operated relief valve)

型號意義 How to order :

S - BS G - 06 - ※ - 2B2 - R

1 2 3 4 5 6 7

| | | |
|---|--------------------------|---|
| 1 | 低噪音型 | Low noise |
| 2 | 系列號 | Series |
| 3 | 板式連接 | SUB-Plate mounting |
| 4 | 口徑代號 | Valve size 03:3/8", 04:3/4", 10:1-1/4" |
| 5 | 壓力調整範圍 | Pressure adjusting range |
| 6 | 電磁閥型號 | Solenoid valve type |
| 7 | 壓力把手位置 | Pressure handle position |
| | R: 把手朝壓力口方向 (標準品・無記號) | R: Handle is facing to the pressure port (standard, no remarked) |
| | L: 把手朝回油口方向 | L: Handle is facing to the tank port |

產品規格 Specification :

| 名稱 Name | 口徑 Valve Size | 型號 Model | 壓力調整範圍 Pressure Adj. Range (Kgf/cm ²) | 最大流量 Max. Flow (ℓ/min) | 重量 Weight (Kg) |
|---|------------------|-------------|---|------------------------------|-------------------|
| 電磁式引導動作型溢流閥低噪音型 Low noise type solenoid pilot operated relief valve | 3/8 | S-SBG-03 | B: 7~70 C: 35~140 | 100 | 5 |
| | 3/4 | S-SBG-06 | H: 70~225 | 200 | 6.2 |
| | 1-1/4 | S-SBG-10 | 2H: 140~315 | 400 | 9.5 |

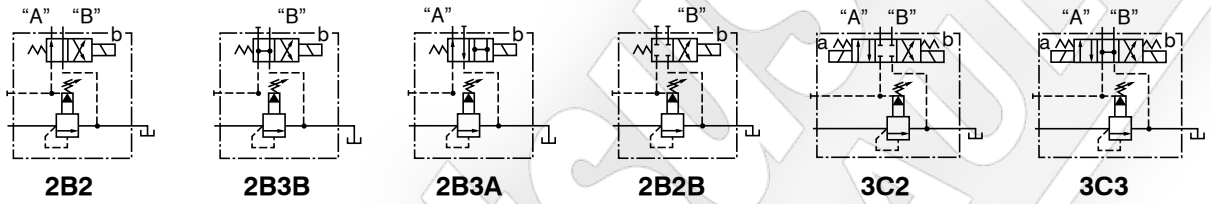
※ 重量為不含電磁閥之淨重。

※ The weight excludes the N. W. of solenoid valve.

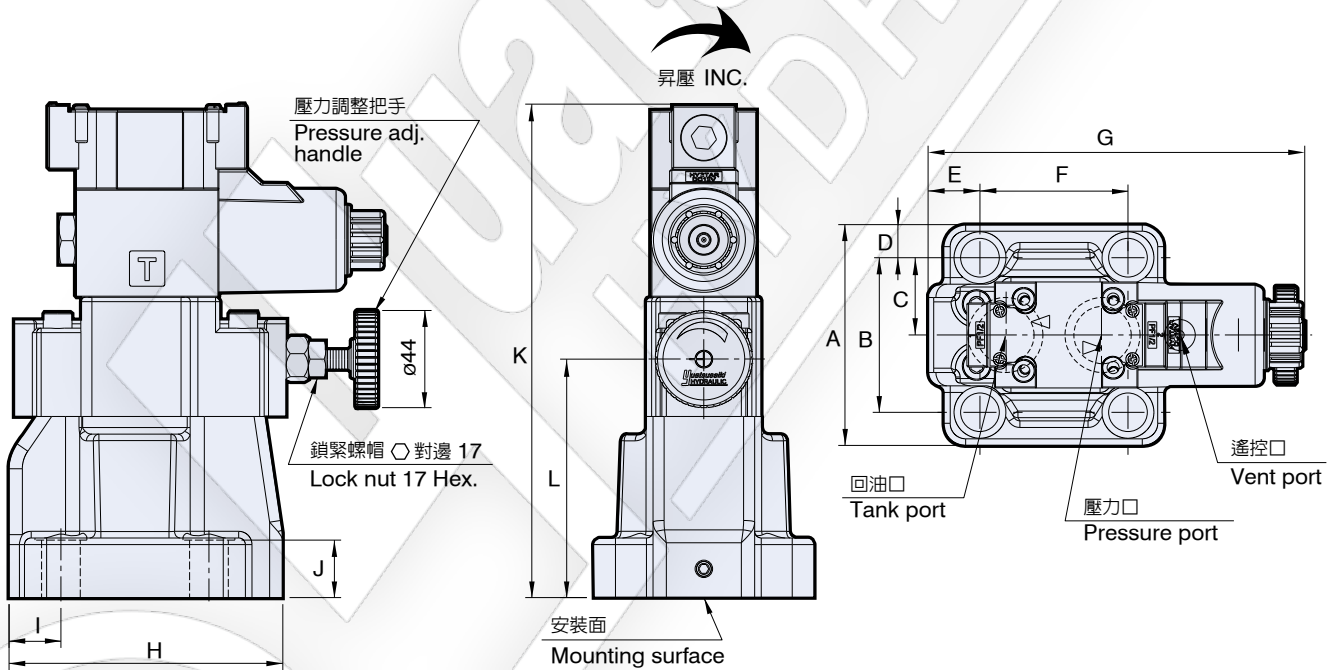
附件 Attachment :

| 型號 Model | 安裝螺絲 Mounting bolts | O 型環 O-Ring |
|----------|---------------------|---|
| S-SBG-03 | M12 x 40L 4 支 piece | JIS B 2401-1B-P9 1 條 piece JIS B 2401-1B-P20 2 條 piece |
| S-SBG-06 | M16 x 45L 4 支 piece | JIS B 2401-1B-P10A 1 條 piece JIS B 2401-1B-P28 2 條 piece |
| S-SBG-10 | M20 x 60L 4 支 piece | JIS B 2401-1B-P10A 1 條 piece JIS B 2401-1B-P36 2 條 piece |

圖形符號 Graphic symbol :



S-BSG-03.06.10

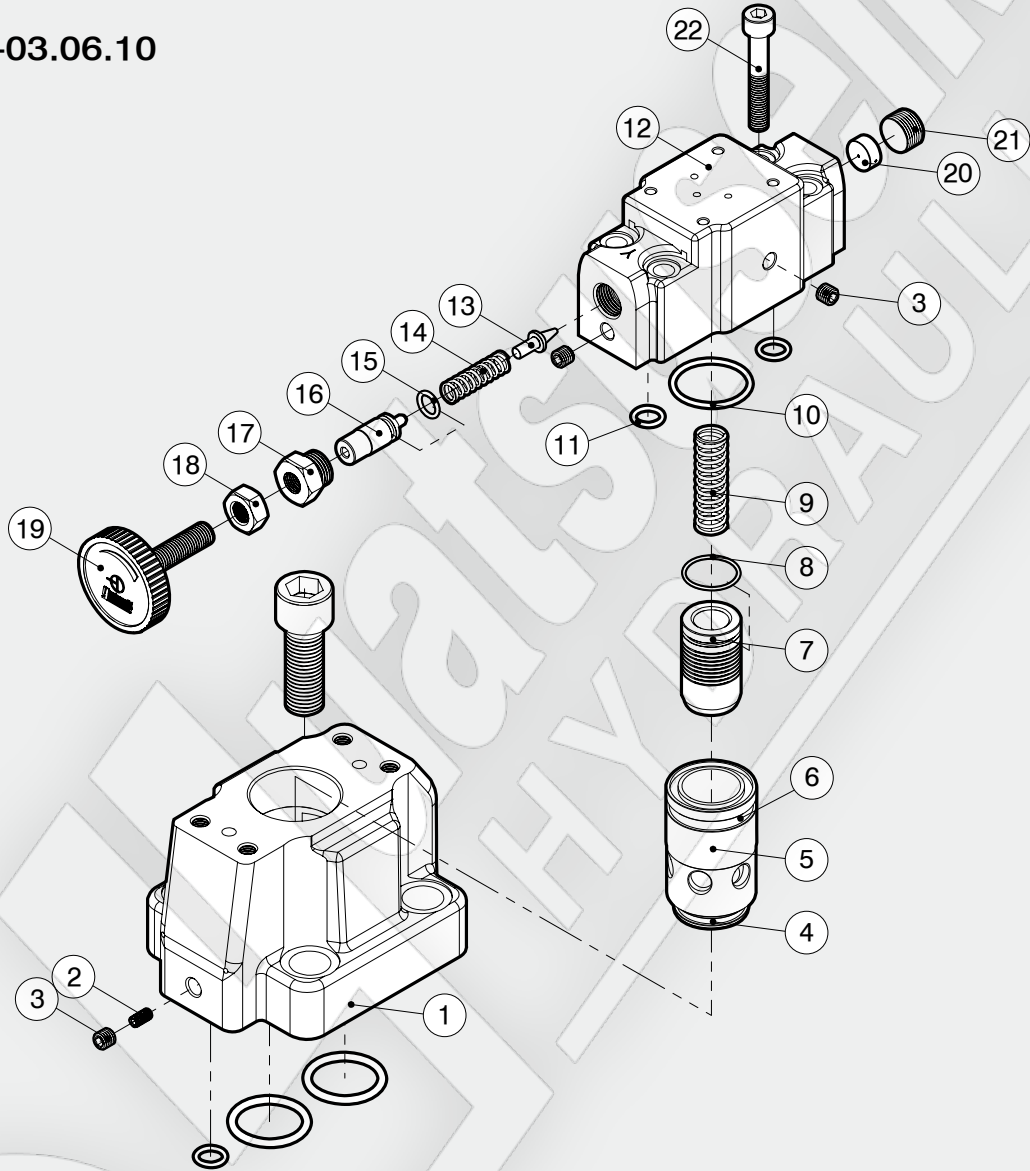


單位 Unit : mm

| 型號 Model | A | B | C | D | E | F | G | H | I | J | K |
|----------|-----|------|------|------|------|------|-------|-----|------|----|-----|
| S-BSG-03 | 78 | 53.8 | 27 | 12 | 34.6 | 53.8 | 168.5 | 107 | 26.5 | 23 | 221 |
| S-BSG-06 | 100 | 70 | 35 | 15 | 23.5 | 66.7 | 171 | 124 | 23.5 | 26 | 223 |
| S-BSG-10 | 127 | 82.6 | 41.3 | 22.2 | 20.5 | 89 | 187 | 155 | 20.5 | 36 | 232 |

爆炸圖 How to order for a complete assembled valve

S-BSG-03.06.10



壓力控制閥 電磁式引導動作型溢流閥低噪音型
Pressure Control Valve (Low noise type solenoid pilot operated relief valve)

| 項次編號 No. | 品名 Name of parts | 數量 Q |
|-------------|---------------------------------|---------|
| 1 | 本體 Body | 1 |
| 2 | M5 x 8L 通孔螺絲 Through hole screw | 1 |
| 3 | PT 1/16 | 3 |
| 4 | SBSG-03 2-024 x 1, 8-024 x 1 | 1 |
| | SBSG-06 2-024 x 1, 8-024 x 1 | 1 |
| | SBSG-10 JIS B 2401-1A-P42 | 1 |
| 5 | 槍子閥座 Check valve seat | 1 |
| 6 | SBSG-03 2-028 x 1, 8-028 x 2 | 2 |
| | SBSG-06 2-028 x 1, 8-028 x 2 | 2 |
| | SBSG-10 JIS B 2401-1A-P44 | 1 |
| 7 | 槍子閥 Check valve | 1 |
| 8 | SBSG-03 SM-22 | 1 |
| | SBSG-06 SM-22 | 1 |
| | SBSG-10 無 None | |
| 9 | 彈簧 Spring | 1 |

| 項次編號 No. | 品名 Name of parts | 數量 Q |
|-------------|---------------------------------|---------|
| 10 | SBSG-03 2-123 | 1 |
| | SBSG-06 2-123 | 1 |
| | SBSG-10 JIS B 2401-1A-P32 | 1 |
| 11 | JIS B 2401-1A-P10A | 2 |
| 12 | 閥蓋 Cover | 1 |
| 13 | 針閥 Pilot poppet | 1 |
| 14 | 彈簧 Spring | 1 |
| 15 | JIS B 2401-1A-P9 | 1 |
| 16 | 推桿 Push rod | 1 |
| 17 | 把手螺母 Nut | 1 |
| 18 | 六角螺母 Nut | 1 |
| 19 | 壓力調整把手 Pressure adj. handle | 1 |
| 20 | 消音墊片 Washer for noise reduction | 1 |
| 21 | PT 3/8 | 1 |
| 22 | M8 x 50L | 4 |