

- PF 系列滿油閥之特性是，體積小，通過流量大，不洩漏。但是開關前需先洩壓才可開啓。
- PF 系列滿油閥之功用是，作為液壓缸與油箱之間的排油閥用途。
- 在大型壓力機構的快進行程需從油箱向油缸吸油。在加壓時可防止油從油缸流入油箱。反向時油缸則會將油排至油箱內。
- The feature of pre-fill valve PF series is compact construction, available for large flow, no leaking. It must leak the pressure before turning on.
- The function of Pre-fill valve PF series is a drain valve between hydraulic cylinder and tank.
- During operation in a large pressure mechanism, it needs to suck oil from tank to hydraulic cylinder. While pressurizing, it prevents the oil flowing from hydraulic cylinder to tank. When reversion, hydraulic cylinder will make oil draining to tank.



PF-80

型號意義 How to order :

PF - 80 - FT

1 2 3

1 系列號	Series
2 口徑代號	Valve size 80:3", 90:3-1/2", 100:4", 125:5", 150:6"
3 FPT: P.T 口皆附法蘭	FPT: With flange on port P, T
FP: P 口附法蘭	FP: With flange on port P
FT: T 口附法蘭	FT: With flange on port T

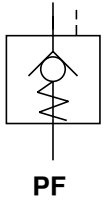
產品規格 Specification :

名稱 Name	口徑 Valve Size	型號 Model	開啓壓力 Max. Pressure (Kgf/cm ²)	最大流量 Max. Flow (ℓ/min)	重量 Weight (Kg)
滿油閥 Pre-fill valves	3	PF-80	250Kg	0.12	8
	3-1/2	PF-90		0.12	11.5
	4	PF-100		0.12	14.5
	5	PF-125		0.12	23
	6	PF-150		0.13	27

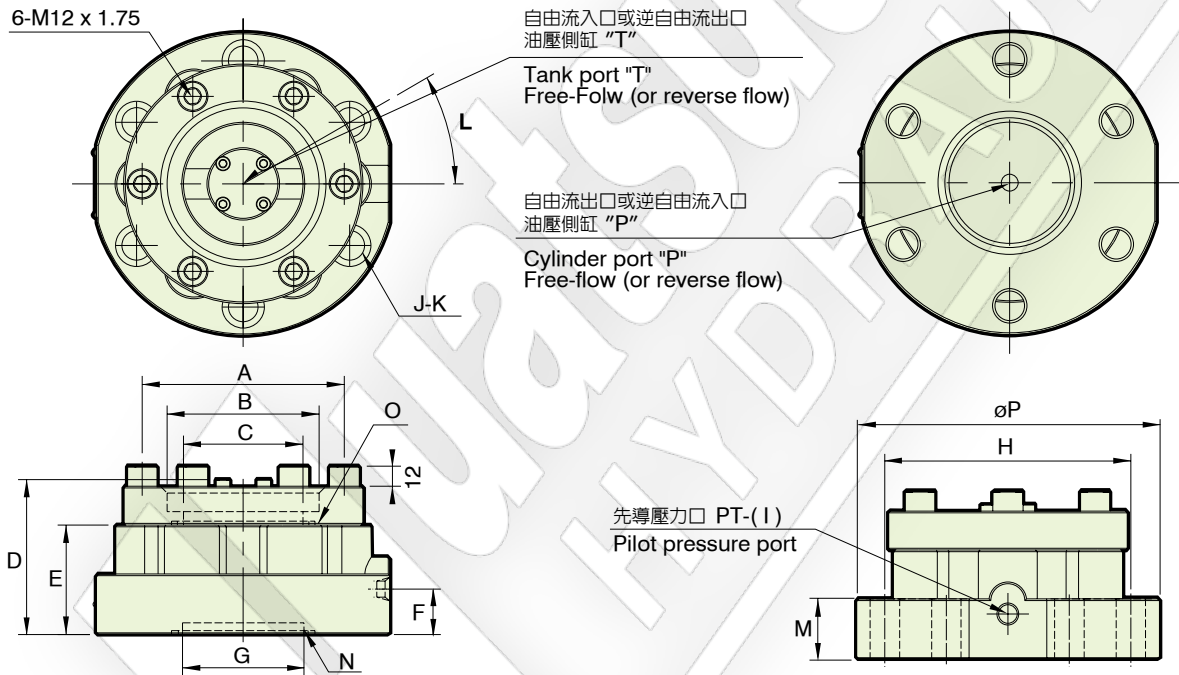
附件 Attachment :

型號 Model	安裝螺絲 (PF法蘭) Mounting bolts (PF Flange)	重量 Weight (Kg)	型號 Model	安裝螺絲 (PT法蘭) Mounting bolts (PT Flange)	重量 Weight (Kg)
PF-80	M16 x 55L 6 支 piece	6.5	PF-80	M12 x 40L 6 支 piece	2.3
PF-90	M18 x 65L 6 支 piece	9	PF-90	M12 x 40L 6 支 piece	2.8
PF-100	M18 x 65L 6 支 piece	14.5	PF-100	M12 x 40L 6 支 piece	2.8
PF-125	M20 x 80L 12 支 piece	25.2	PF-125	M12 x 50L 6 支 piece	4
PF-150	M20 x 95L 16 支 piece	28	PF-150	M16 x 50L 8 支 piece	8

圖形符號 Graphic symbol :



PF-80.90.100.125.150



單位 Unit : mm

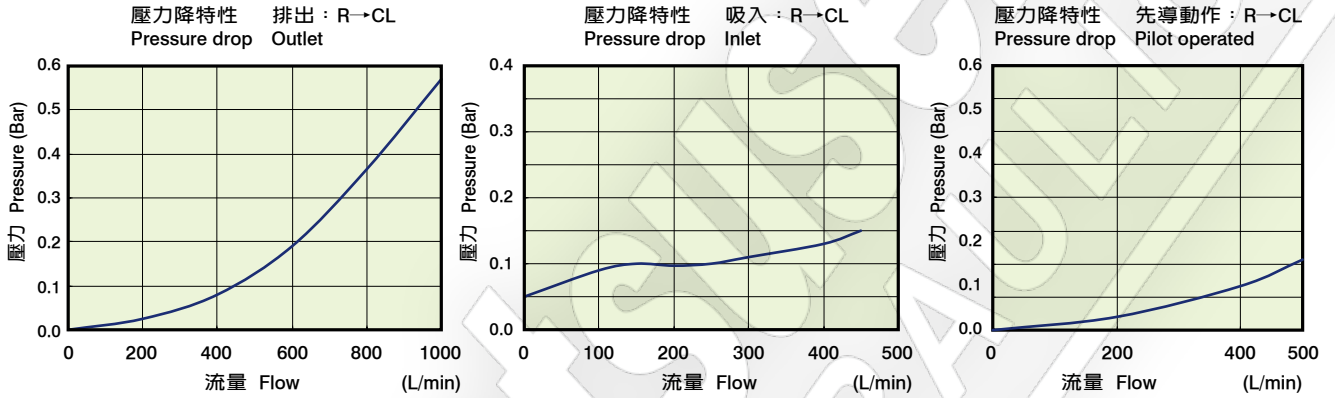
型號 Model	A	B	C	D	E	F	G	H	I	J	K	L	M	N	O	P
PF-80	120	90	71	95.5	66	22.5	71	146	PT 1/4	6	ø17.5	30	33	G80	G85	180
PF-90	135	102	89	120	74	27.5	88	165	PT 1/4	6	ø17.5	30	43	G100	G100	200
PF-100	148	115.5	108	139	76	27.5	106	191	PT 1/4	6	ø17.5	30	45	G115	G115	230
PF-125	175	141	130.5	165	85	43	130	230	PT 1/4	12	ø22	15	55	G145	G145	265
PF-150	200	167	155	204	105	44.5	168	260	PT 3/8	16	ø22	11.25	64	G180	G180	295

性能曲線圖 Performance curves

■ 流量-壓力特性曲線圖

The characteristic curve chart of Flow vs. Pressure

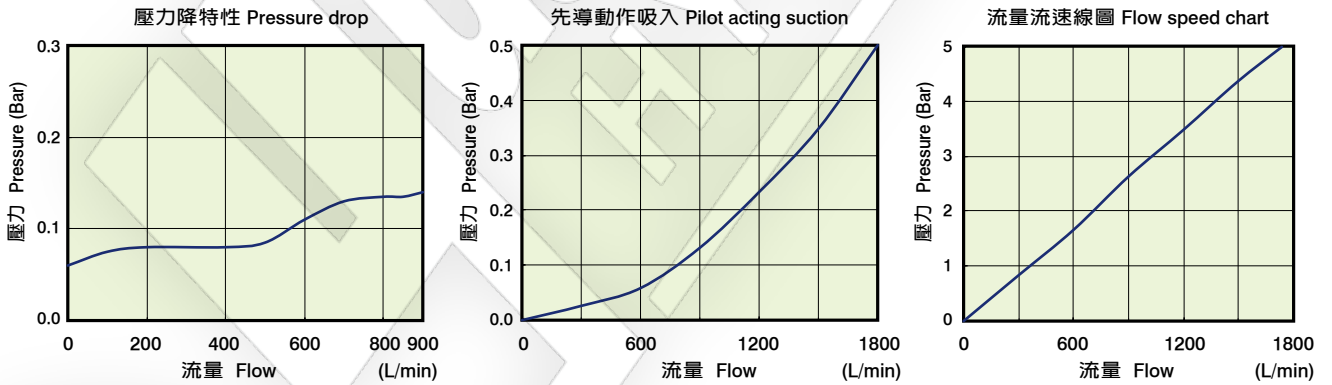
測試條件：黏度 Test fluid viscosity: 35mm²/s {cSt}
Test temperature 50°C 比重 Specific gravity of 0.850



■ 流量-壓力特性曲線圖

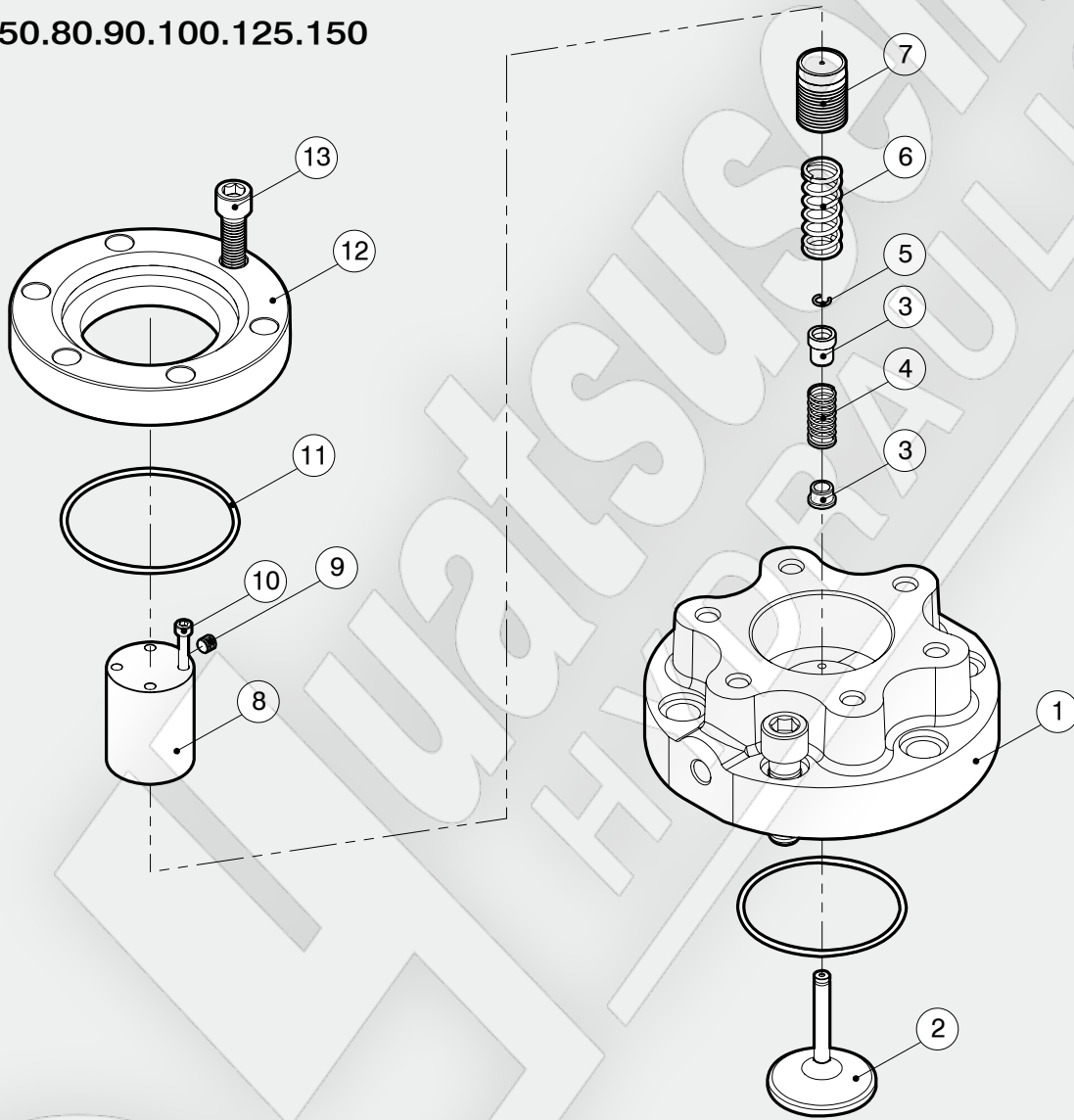
The characteristic curve chart of Flow vs. Pressure

測試條件：黏度 Test fluid viscosity: 35mm²/s {cSt}
Test temperature 50°C 比重 Specific gravity of 0.850



爆炸圖 How to order for a complete assembled valve

PF-50.80.90.100.125.150



方向控制閥
滿油閥
Directional Control Valve (Pre-fill valves)

項次編號 No.	品名 Name of parts	數量 Q
1	本體 Body	1
2	推桿 Push rod	1
3	彈簧固定墊圈 Spring retainer	1
4	彈簧(右旋) Spring (R)	1
5	彈簧C扣 Spring ring	1
6	彈簧(左旋) Spring (L)	1
7	活塞 Piston	1
8	活塞座 Piston seat	1
9	PT 1/16	1
10	PF-50 M4 x 50L	4
	PF-80 M5 x 65L	4
	PF-90 M5 x 80L	4
	PF-100 M5 x 90L	8
	PF-125 M6 x 110L	8
	PF-150 M8 x 140L	8

項次編號 No.	品名 Name of parts	數量 Q
PF-50	JIS B 2401-1B-G60	1
PF-80	JIS B 2401-1B-G85	1
11	PF-90 JIS B 2401-1B-G105	1
	PF-100 JIS B 2401-1B-G120	1
	PF-125 JIS B 2401-1B-G145	1
	PF-150 JIS B 2401-1B-G170	1
	12 法蘭 Flange	1
13	PF-50 M10 x 35L	4
	PF-80 M12 x 40L	6
	PF-90 M12 x 40L	6
	PF-100 M12 x 40L	6
	PF-125 M12 x 45L	6
	PF-150 M12 x 50L	8