

- DBW 系列是電磁式引導動作型溢流閥之結構，是由溢流閥與電磁換向閥組成。
- 低噪音特性，操作穩定性高。
- 保護泵和控制閥以免超壓，並使液壓系統維持恆定壓力。
- 利用卸油口實現遠程控制和卸載應用。
- 此系列溢流閥具有低噪音特性。
- DBW series is a configuration of solenoid type pilot operated relief valve, composed of relief valve and solenoid operated directional control valve.
- Low noise and high operation stability.
- It protects the pump and control valve avoiding the pressure beyond, and makes hydraulic system to keep the invariable pressure.

- It uses the drain port to apply for remote control and unloading.
- Type designed with low noise.


DBW-10. 20. 30

型號意義 How to order :

DBW - 20 - H - 2B2

1 2 3 4

| | | |
|---|--------|--|
| 1 | 系列號 | Series |
| 2 | 口徑代號 | Valve size 10:3/8", 20:3/4", 30:1-1/4" |
| 3 | 壓力調整範圍 | Pressure adjusting range |
| 4 | 電磁閥型號 | Solenoid valve type |

產品規格 Specification :

| 名稱 Name | 口徑 Valve Size | 型號 Model | 壓力調整範圍 Pessure Adj. Range (Kgf/cm ²) | 最大流量 Max. Flow (ℓ/min) | 最高使用壓力 Max. Operating Pressure (Kg) | 重量 Weight (Kg) | |
|--|------------------|-------------|--|------------------------------|---|----------------------|-----|
| 電磁引導動作型溢流閥 Solenoid control relief valve | 3/8 | DBW-10 | B: 7~70 C: 7~140 H: 7~210 2H: 7~210 | 100 | 320 | 3.3 | |
| | 3/4 | DBW-20 | | 200 | | | 4.4 |
| | 1-1/4 | DBW-30 | | 400 | | | 6.5 |

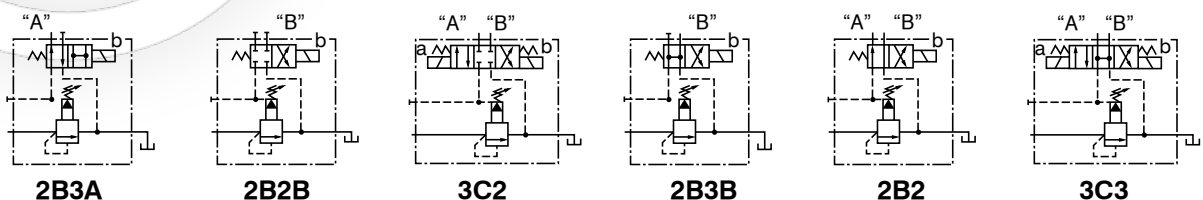
※ 重量為不含電磁閥之淨重。

※ The weight excludes the N. W. of solenoid valve.

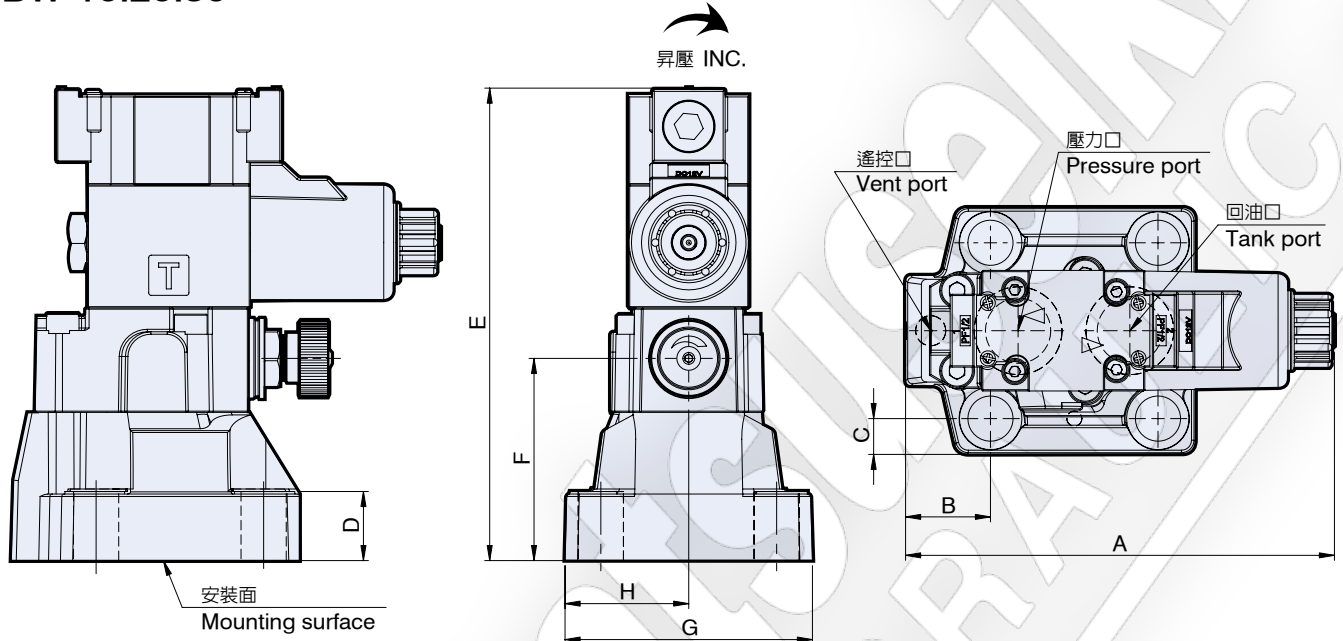
附件 Attachment :

| 型號 Model | 安裝螺絲 Mounting bolts | O 型環 O-Ring |
|----------|---------------------|---|
| DBW-10 | M12 x 40L 4 支 piece | JIS 2401-1B-P9 1 條 piece JIS 2401-1B-P18 2 條 piece |
| DBW-20 | M16 x 45L 4 支 piece | JIS 2401-1B-P9 1 條 piece JIS 2401-1B-P29 2 條 piece |
| DBW-30 | M20 x 55L 4 支 piece | JIS 2401-1B-P9 1 條 piece JIS 2401-1B-P36 2 條 piece |

圖形符號 Graphic symbol :



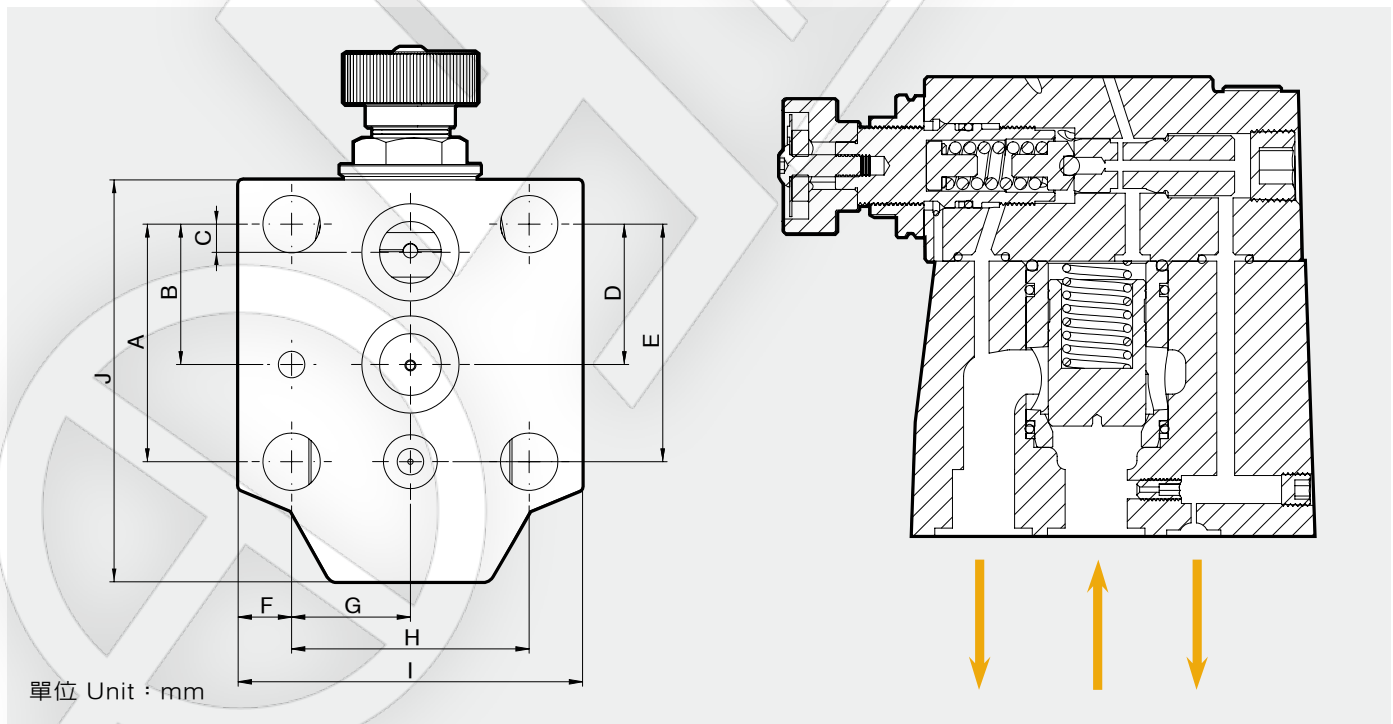
DBW-10.20.30



單位 Unit : mm

| 型號 Model | A | B | C | D | E | F | G | H | | | | |
|----------|--------|------|-------|------|-------|------|-------|-------|--|--|--|--|
| DBW-10 | 164.25 | 27.2 | 12.1 | 27 | 190.6 | 83.5 | 78 | 39 | | | | |
| DBW-20 | 170.75 | 33.8 | 14.25 | 27.5 | 187.6 | 80.5 | 98.5 | 49.25 | | | | |
| DBW-30 | 184.2 | 42 | 15.9 | 29 | 190.6 | 83.5 | 114.5 | 57.25 | | | | |

底板尺寸圖 Bottom plate dimensions

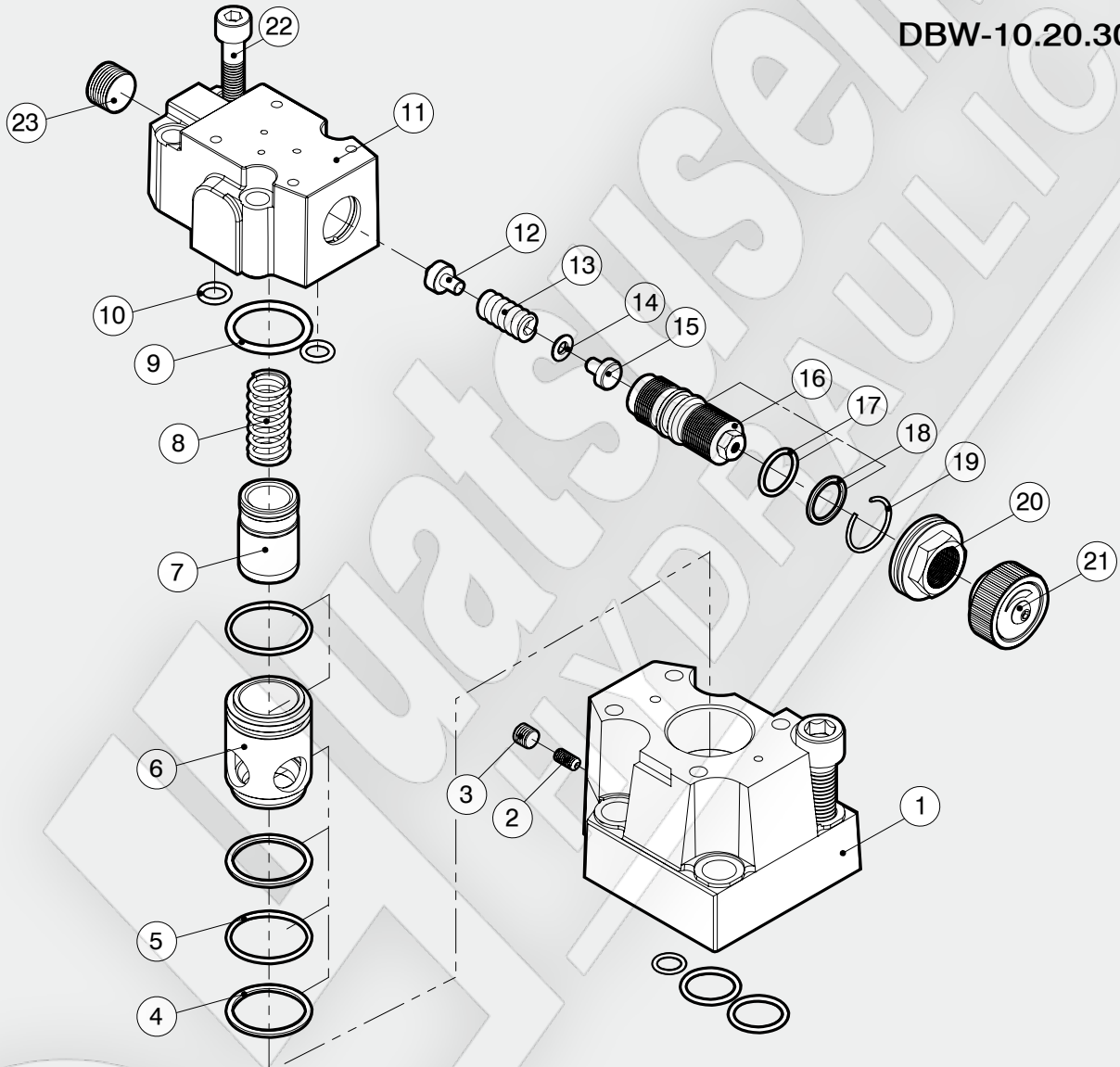


單位 Unit : mm

| 型號 Model | A | B | C | D | E | F | G | H | I | J | | |
|----------|------|------|------|------|-------|-------|-------|------|-------|-------|--|--|
| DBW-10 | 53.8 | 31.8 | 6.4 | 31.8 | 53.8 | 12.1 | 26.9 | 53.8 | 78 | 91 | | |
| DBW-20 | 66.7 | 33.3 | 11.2 | 55.7 | 90.5 | 14.25 | 35 | 70 | 98.5 | 115.5 | | |
| DBW-30 | 90 | 45.5 | 13.8 | 77.3 | 121.8 | 15.9 | 41.35 | 82.7 | 114.5 | 150 | | |

爆炸圖 How to order for a complete assembled valve

DBW-10.20.30



| 項次編號 No. | 品名 Name of parts | 數量 Q | 項次編號 No. | 品名 Name of parts | 數量 Q |
|-------------|---------------------------------|---------|-------------|-----------------------------|---------|
| 1 | 本體 Body | 1 | 13 | 彈簧 Spring | 1 |
| 2 | M5 x 8L 通孔螺絲 Through hole screw | 1 | 14 | 墊片 Washer | 1 |
| 3 | PT 1/16 | 1 | 15 | 彈簧固定墊圈 Spring retainer | 1 |
| 4 | 8-024 | 2 | 16 | 調整螺桿 Adj. screw | 1 |
| 5 | SM-29 | 2 | 17 | 2-016 | 1 |
| 6 | 槍子閥座 Check valve seat | 1 | 18 | 8-016 | 1 |
| 7 | 槍子閥 Check valve | 1 | 19 | 扣簧 Retainer | 1 |
| 8 | 彈簧 Spring | 1 | 20 | 固定螺帽 Nut | 1 |
| 9 | 2-121 | 1 | 21 | 壓力調整把手 Pressure adj. handle | 1 |
| 10 | JIS B 2401-1B-P9 | 2 | 22 | M8 x 40L | 4 |
| 11 | 閥蓋 Cover | 1 | 23 | PT 3/8 | 1 |
| 12 | 球閥座 Check valve seat | 1 | | | |