

- BG 系列引導動作型溢流閥，採用先導式設計，除了具有低噪音設計特性，並提供系統中之穩壓作用。也適合遠程控制及卸載應用。

- Pilot operated relief valve BG series is designed with pilot, the feature includes low noise, and stabilizing the system pressure, also suitable for remote control and unloading.



BG-03.06.10

型號意義 How to order :

B G - 06 - ※ K

1 2 3 4 5

1	系列號	Series
2	板式連接	SUB-Plate mounting
3	口徑代號	Valve size 03:3/8", 06:3/4", 10:1-1/4"
4	壓力調整範圍	Pressure adjusting range
5	連動型	Linked type

產品規格 Specification :

名稱 Name	口徑 Valve Size	型號 Model	壓力調整範圍 Pressure Adj. Range (Kgf/cm ²)	最大流量 Max. Flow (ℓ/min)	重量 Weight (Kg)
引導動作型溢流閥 Pilot operated relief valves	3/8	BG-03	B: 7~70 C: 35~140 H: 70~225 2H: 140~315	100	5
	3/4	BG-06		200	6.2
	1-1/4	BG-10		400	10

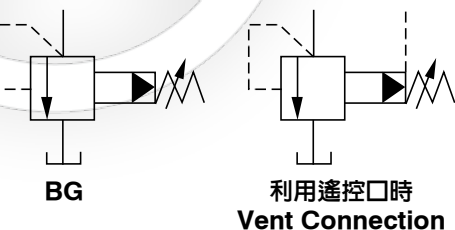
※ BG-K為連動型引導動作型溢流閥，為低背壓使用。

※ BG-K is linked type and pilot operated relief valve for low backpressure using.

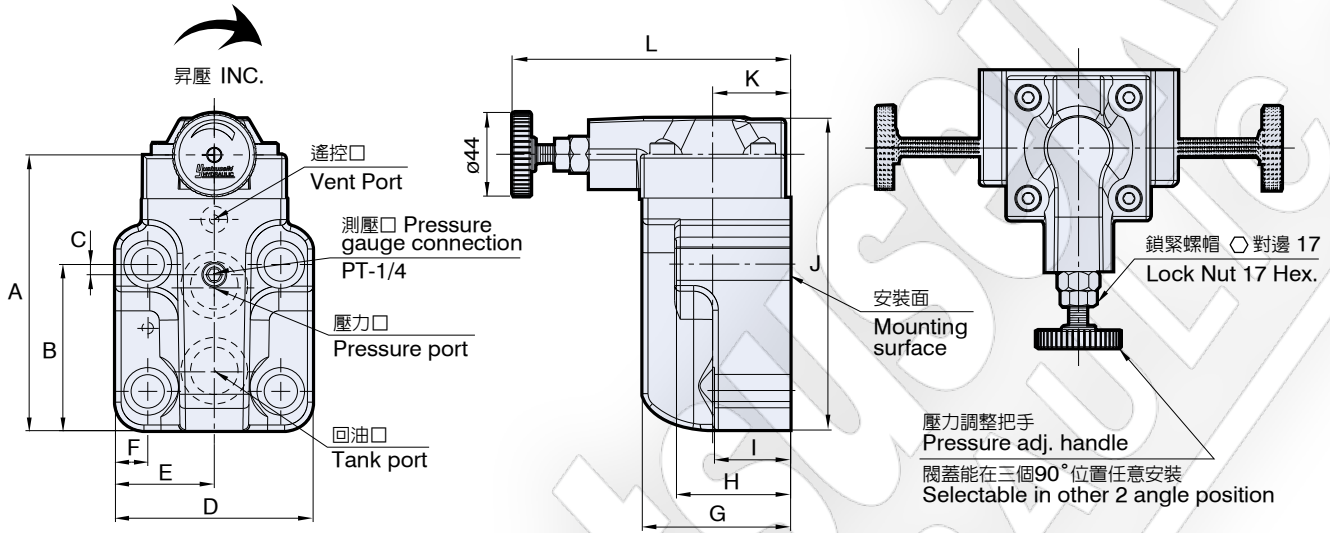
附件 Attachment :

型號 Model	安裝螺絲 Mounting bolts		O 型環 O-Ring	
BG-03	M12 x 70L 2 支 piece	M12 x 90L 2 支 piece	JIS B 2401-1B-P9 1 條 piece	JIS B 2401-1B-P20 2 條 piece
BG-06	M16 x 55L 2 支 piece	M16 x 75L 2 支 piece	JIS B 2401-1B-P10A 1 條 piece	JIS B 2401-1B-P29 2 條 piece
BG-10	M20 x 70L 2 支 piece	M20 x 90L 2 支 piece	JIS B 2401-1B-P10A 1 條 piece	JIS B 2401-1B-P36 2 條 piece

圖形符號 Graphic symbol :



BG-03.06.10



單位 Unit : mm

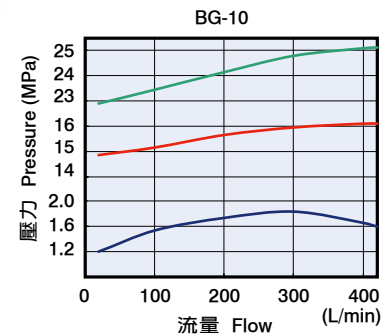
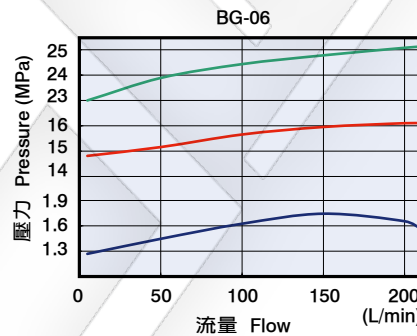
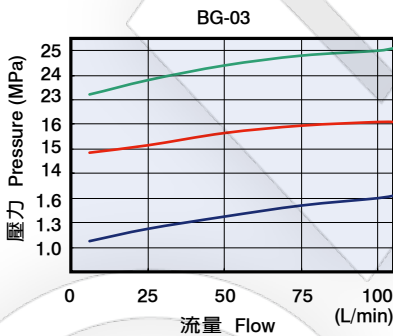
型號 Model	A	B	C	D	E	F	G	H	I	J	K	L
BG-03	117	75	22	83	41.5	14.6	79.5	76	56	135	41	148.5
BG-06	145	87.5	5.5	104	52	17	79	58.5	40	164	41	148.5
BG-10	174.3	106	8	125	62.5	21.2	90	69.5	49.5	195	46	154

性能曲線圖 Performance curves

■ 流量-壓力特性曲線圖

The characteristic curve chart of Flow vs. Pressure.

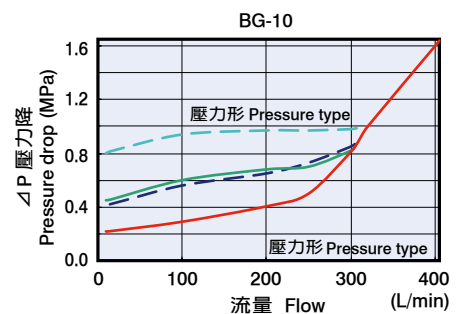
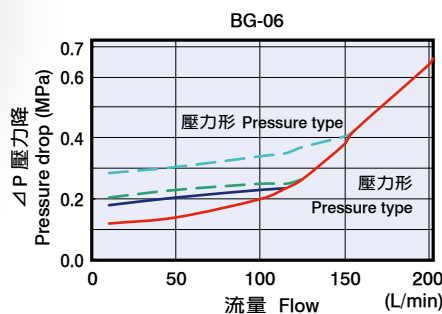
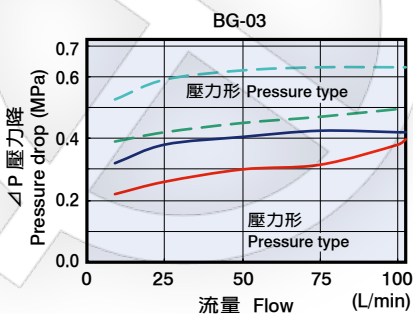
使用油：黏度 Test fluid viscosity: 35mm²/s {cSt}
比重 Specific gravity of 0.850



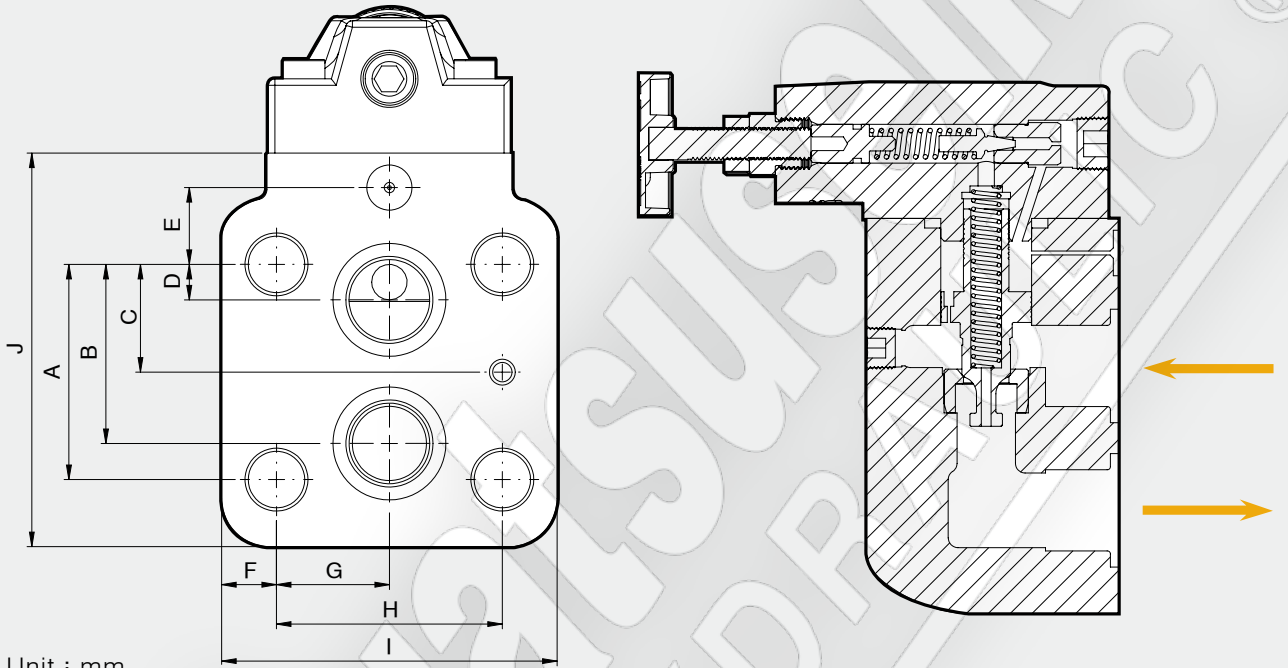
■ 流量-壓力降特性曲線圖

Flow vs. Pressure drop curve chart.

使用油：黏度 Test fluid viscosity: 35mm²/s {cSt}
比重 Specific gravity of 0.850



底版尺寸圖 Bottom plate dimensions

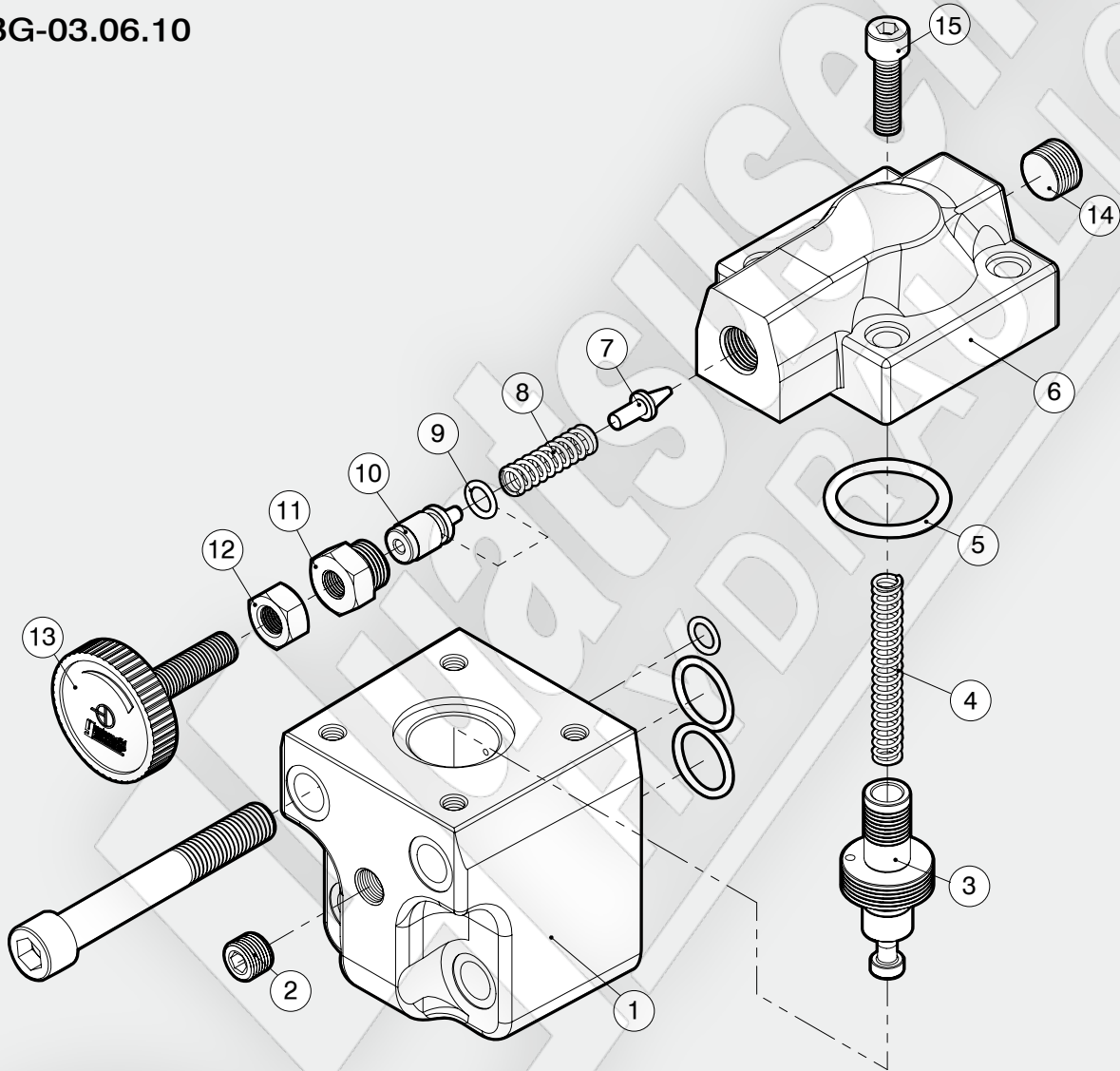


單位 Unit : mm

型號 Model	A	B	C	D	E	F	G	H	I	J		
BG-03	53.8	47.4	22	22	0	14.6	26.9	53.8	80	93		
BG-06	66.7	55.5	33.4	11	23.8	17	35	70	104	122		
BG-10	88.9	76.2	44.5	12.5	31.8	21.2	41.3	82.6	125	148		

爆炸圖 How to order for a complete assembled valve

BG-03.06.10



項次編號 No.	品名 Name of parts	數量 Q
1	本體 Body	1
2	PT 1/4	1
3	心軸 Spool	1
4	彈簧 Spring	1
5	BG-03.06 JIS B 2401-1B-P32	1
	BG-10 JIS B 2401-1B-P42	1
6	閥蓋 Cover	1
7	針閥 Pilot poppet	1
8	彈簧 Spring	1

項次編號 No.	品名 Name of parts	數量 Q
9	JIS B 2401-1A-P9	1
10	推桿 Push rod	1
11	把手螺母 Nut	1
12	六角螺母 Nut	1
13	壓力調整把手 Pressure adj. handle	1
14	PT 3/8	1
15	BG-03.06 M8 x 30L	4
	BG-10 M10 x 40L	4